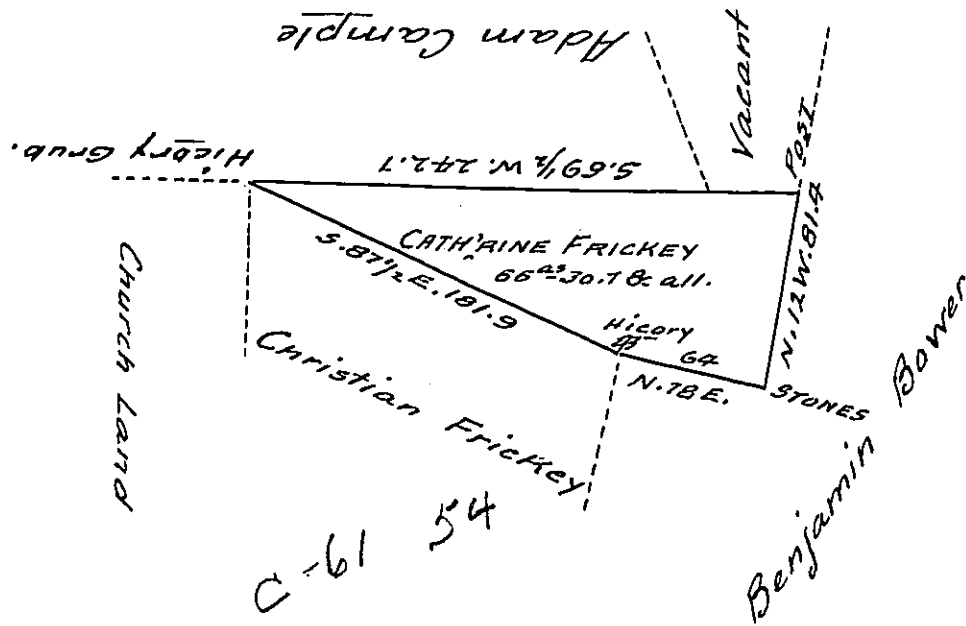


C-65-264



The Draught of a Tract of Land situate in Lower Mahanoy Township in the County of Northumberland, Adjoining Lands of Benjamin Bower, Adam Campbell & others Containing sixty six acres, and thirty - perches & seven tenths of a perch, with the usual allowance of six per cent for Roads &c. Surveyed on the 15th day of April 1811 unto Catharine Frickey by virtue of ^{10th} warrant bearing date on the 11th day of April 1811

Thos Woodside D.S.

To Andrew Porter Esq^r
Surveyor General.

IN TESTIMONY that the above is a copy of the original remaining on file in the Department of Internal Affairs of Pennsylvania, made conformably to an Act of Assembly approved the 16th day of February, 1833, I have hereunto set my Hand and caused the Seal of said Department to be affixed at Harrisburg, this Nineteenth day of December 1904.

Joseph P. Brown
Secretary of Internal Affairs